

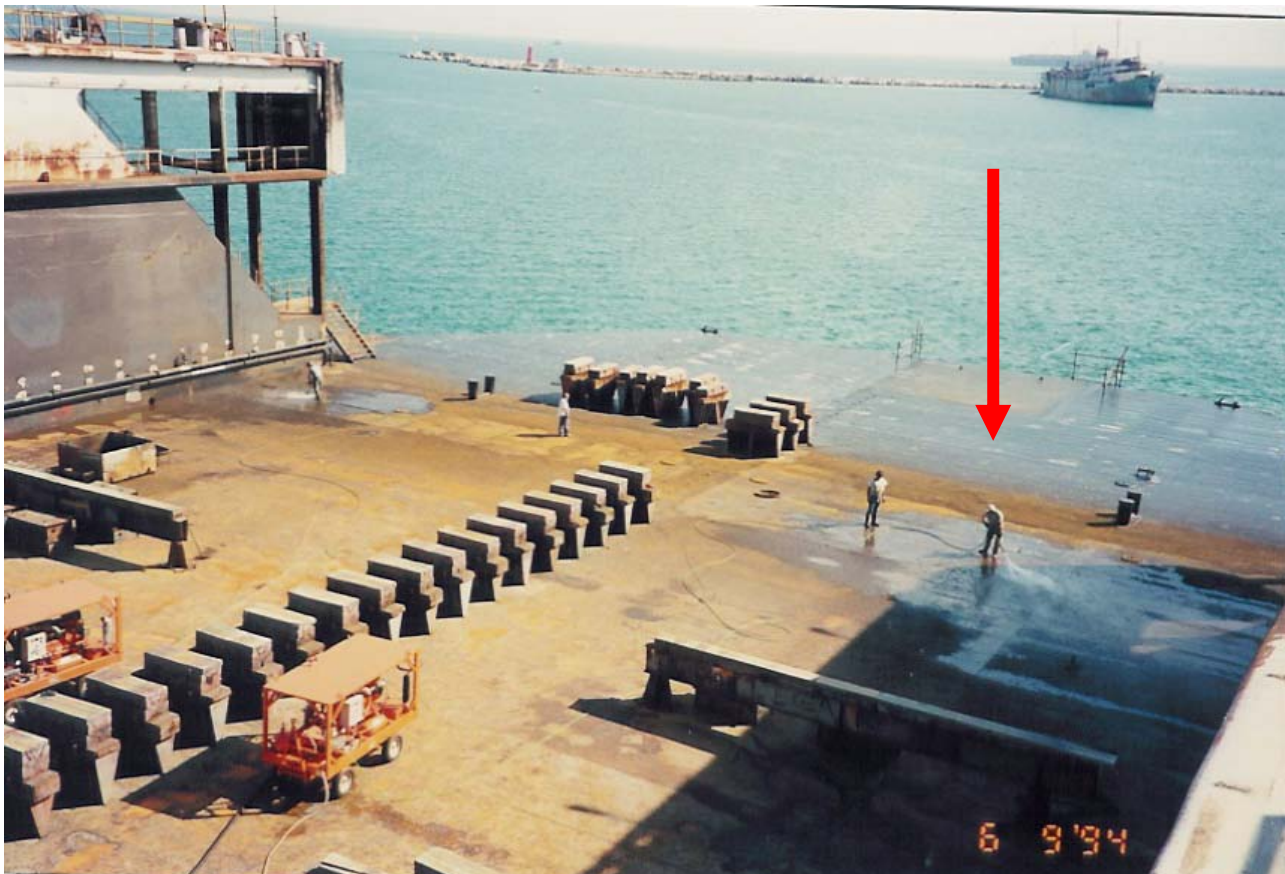
## ***Application Report No. A 05-5e***

### **Dry Docks – Steel Preparation to WJ - 2**

Page 1/2

Status: 11/2004

PTC, Italy



Not only on ships and ships' surfaces is the subject of rust removal and surface preparation a recurring subject - on dry docks the matter is of equal importance.

Our Italian partner carried out surface preparation of a dry dock in La Spezia, Italy.

The customer was demanding a surface quality of WJ-2 (our Report A5-0) gives details of the standards applicable).

To do the job, two high pressure units were used, each of them fitted with a KAMAT pump model K 9018 A, giving a performance of each 25 l/min at 1200 bar.

The accessories used were guns type KSP 1200 and KAMAT Rotating Nozzles Type PRD 1500.

**Application Report No. A 05-5e**  
**Dry Docks – Steel Preparation to WJ - 2**

Page 2/2

Status: 11/2004

PTC, Italy



High pressure unit  
with diesel engine  
and KAMAT Pump  
Type K 9018 A  
(25 l/min. at 1200  
bar)

Worker with High Pressure Gun  
Type KAMAT KSP 1200 and  
Rotating Nozzle Type PRD 1500

Using the method described above a surface performance of  
**30 - 40 m<sup>2</sup>**  
could be achieved