

## PRD 3000 Air

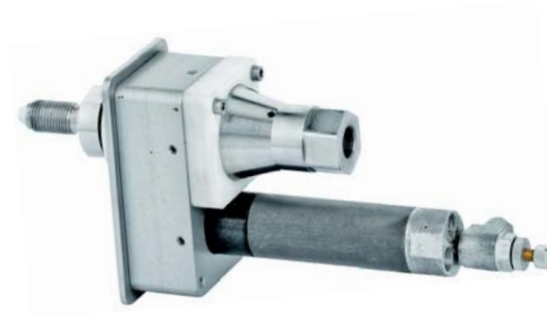
Z 30-1 e

Pneumatically driven rotating nozzle

01.04.2008

- Pneumatic drive with air motor  
(without nozzle head)

Part No. 7006445



### Technical data

Max. working pressure:	3000 bar
Max. flow rate:	30 l/min
Hose connection:	M 14 x 1.5 left female
Nozzle head connection:	M 14 x 1.5 left female
Length:	230 mm
Weight:	approx. 1.5 kg
Usable nozzle heads:	see page Z 35-1 e

Pneumatic Drive:	
Speed rpm:	0 - 3000 rpm
Air connection:	Quick coupling for air hose ID 6
Air requirement:	5.0 l/s (filtered & oiled air)
Air working pressure:	6.3 bar

### Applications

- Can be fitted to lances and guided equipment
- Cleaning of surfaces and pipes
- Removal of paint and coatings
- Removal of concrete; laying bare reinforcements
- Cleaning and washing of concrete and stones



For hand-held operation of a spray gun the nozzle diameter must be selected to ensure that the reaction force in the longitudinal axis when used at the max. operating pressure does not exceed 250 N. If the reaction force is in excess of 150 N the gun must be equipped with a support, in compliance with the European Norm prEN 1829