



since 1974



Portfolio

# PLUNGER PUMPS

Pumps | Valves | Applications

# HIGH-PRESSURE TECHNOLOGY AND SOLUTIONS BY KAMAT

## Customised plunger pumps for any industrial application

We are a German manufacturer of industrial crankshaft-driven plunger pumps with three or five plungers for pressures ranging from 0 bar to more than 3500 bar and up to 1500 kW power input.

Being in the market since 1974, and with a worldwide distribution net, we are experienced in designing and producing high-pressure technology and high-pressure solutions for our customers.

Our well-known design flexibility of high-pressure plunger pumps and components allows us to cover most of the possible applications. These can be divided into three general groups: water jetting, hydraulics and process technology.

## MODULAR DESIGN MAKES IT EASY TO FIND THE RIGHT PUMP

As a high-pressure system supplier KAMAT designs and manufactures plunger pumps using a modular system: each pump type is based on a certain size gear box and assembled from different recombined modules for various applications up to 3500 bar and 1500 kW.

Our present pump portfolio gives an overview of our eleven pump types, our two pump heads and our different pump and hydraulic valves. As a first step, it introduces our customers to our modular system. Further details can always be discussed with our sales experts and engineers.

Even if the requested pump is not in our portfolio at first glance, we are able to find the right solution for any project! Providing individual and custom-made high-pressure solutions – that is what we can!

## PUMP POWER INPUT

|            | max. flow  | max. pressure | max. power input |
|------------|------------|---------------|------------------|
| K100-3     | 7 l/min    | 2000 bar      | 15 kW            |
| K4500-3    | 232 l/min  | 2000 bar      | 45 kW            |
| K8000-3G   | 283 l/min  | 2950 bar      | 75 kW            |
| K9000-3G   | 283 l/min  | 3100 bar      | 90 kW            |
| K11000-3G  | 454 l/min  | 2760 bar      | 110 kW           |
| K18000-3G  | 522 l/min  | 3500 bar      | 180 kW           |
| K25000-3G  | 1148 l/min | 3200 bar      | 250 kW           |
| K45000-3G  | 1310 l/min | 3500 bar      | 450 kW           |
| K55000-5G  | 1913 l/min | 3500 bar      | 550 kW           |
| K100000-5G | 3482 l/min | 3500 bar      | 1000 kW          |
| K150000-5G | 4677 l/min | 3500 bar      | 1500 kW          |



## UNIQUE KAMAT FEATURES

- made from high-quality materials sourced in Germany
- stainless as standard, special materials available
- 100% designed and manufactured in Germany
- pump body made as a single forged component thus reducing failure probability due to a lack of seals
- compact, low weight to power ratio, extremely small footprint
- low NPSHr thus preventing cavitation
- optimised for VFD drive
- high particle tolerance thus no high demands on the fluid's filtration up to 350 µm
- easy to install, to service and to maintain
- high viscosity fluids
- low number of mostly interchangeable parts – less seals, less leaks, lower failure probability
- simple service, without dismantling the gear box or pump head removal, no hoist needed
- pumps are supported worldwide
- API 674, ATEX, MA, EAC (GOST), EN ISO 9001
- customised sealing solutions
- > 90% efficiency

## MAIN FIELDS OF APPLICATION



Hydraulics



Process Industry



Jetting



Mining



## KAMAT PLUNGER PUMPS

### K100-3

- max. 2000 bar
- max. 7 l/min
- max. 15 kW
- 25 kg



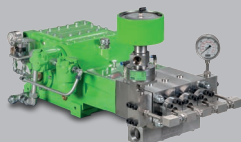
### K4500-3

- max. 3000 bar
- max. 232 l/min
- max. 45 kW
- 195 kg



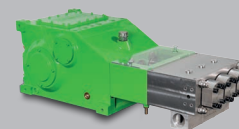
### K8/9000-3G

- max. 3100 bar
- max. 283 l/min
- max. 75/90 kW
- 255 kg



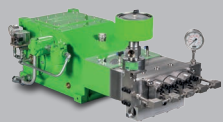
### K11000-3G

- max. 2760 bar
- max. 454 l/min
- max. 110 kW
- 425 kg



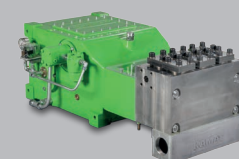
### K18000-3G

- max. 3500 bar
- max. 522 l/min
- max. 180 kW
- 440 kg



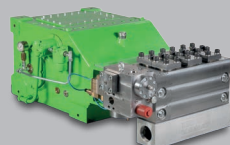
### K25000-3G

- max. 3200 bar
- max. 1148 l/min
- max. 250 kW
- 965 kg



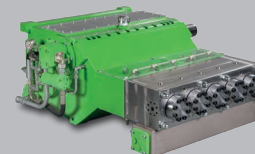
### K45000-3G

- max. 3500 bar
- max. 1310 l/min
- max. 450 kW
- 1360 kg



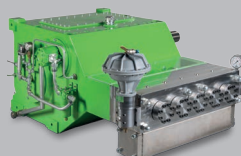
### K55000-5G

- max. 3500 bar
- max. 1913 l/min
- max. 550 kW
- 2200 kg



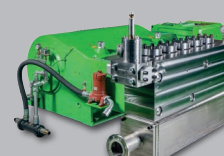
### K100000-5G

- max. 3500 bar
- max. 3482 l/min
- max. 1000 kW
- 3650 kg



### K150000-5G

- max. 3500 bar
- max. 4677 l/min
- max. 1500 kW
- 7500 kg



## HYDRAULIC VALVES

### PRESSURE LIMITING VALVES

- max. 4000 bar
- max. 4600 l/min



### UNLOADER VALVES

- max. 700 bar
- max. 3600 l/min



### CONTROL VALVES

- max. 3500 bar
- max. 240 l/min



### SAFETY VALVES

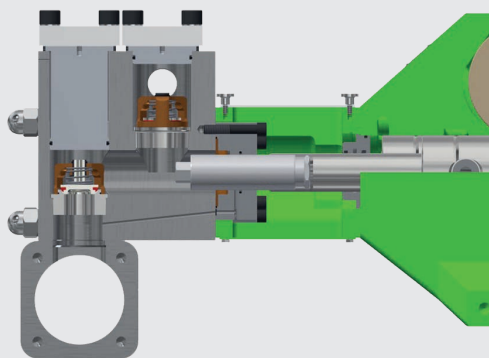
- max. 4000 bar
- max. 4700 l/min



## PUMP HEADS

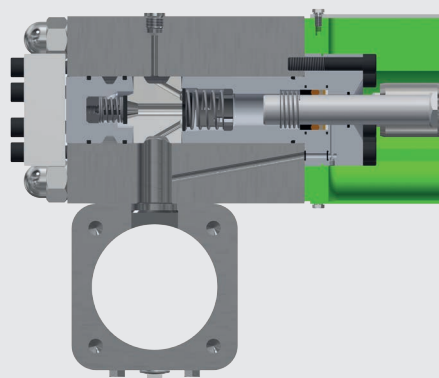
### M - HEAD

- pressure range 0 - 1000 bar
- filtration < 350 µm
- valve design vertical
- plate and soft valves



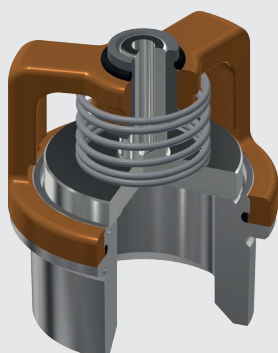
### A - HEAD

- pressure range 0 - 3500 bar
- filtration < 100 µm
- valve design horizontal
- load cycle free

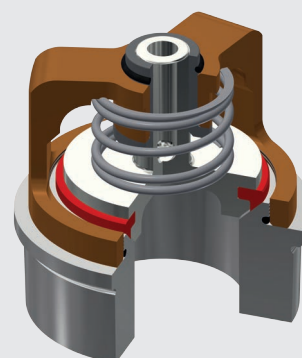


## PUMP HEAD VALVES

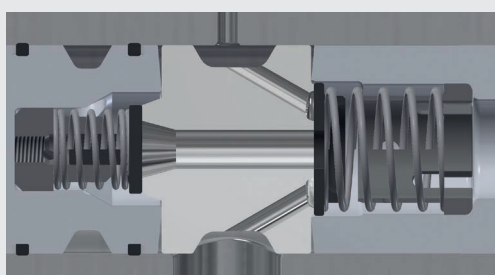
### M VALVE PLATE



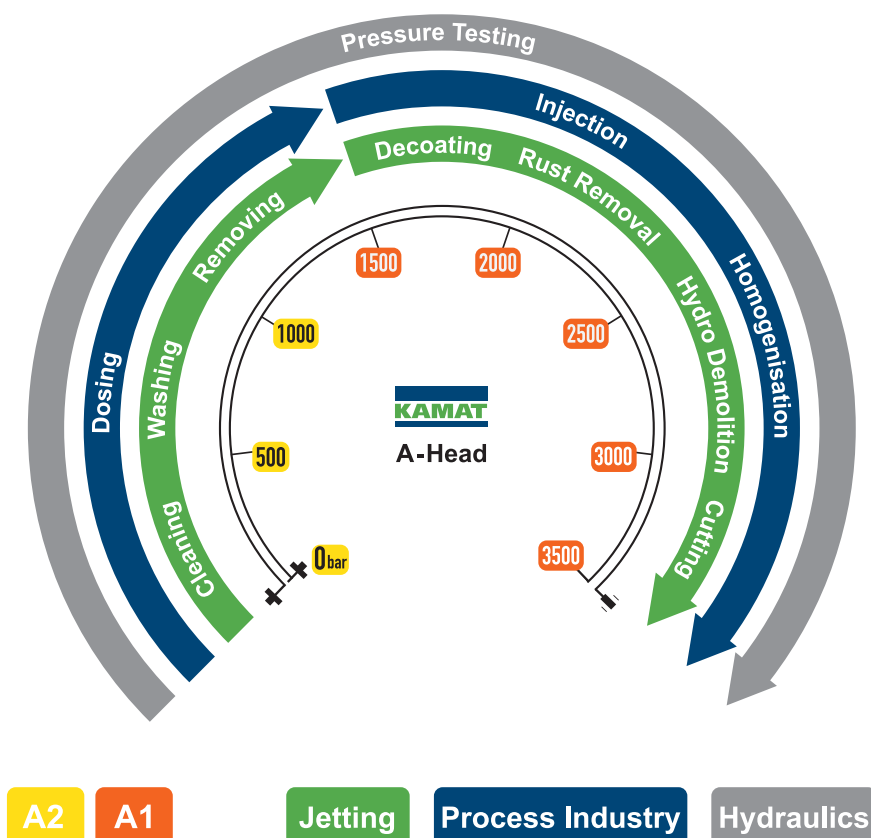
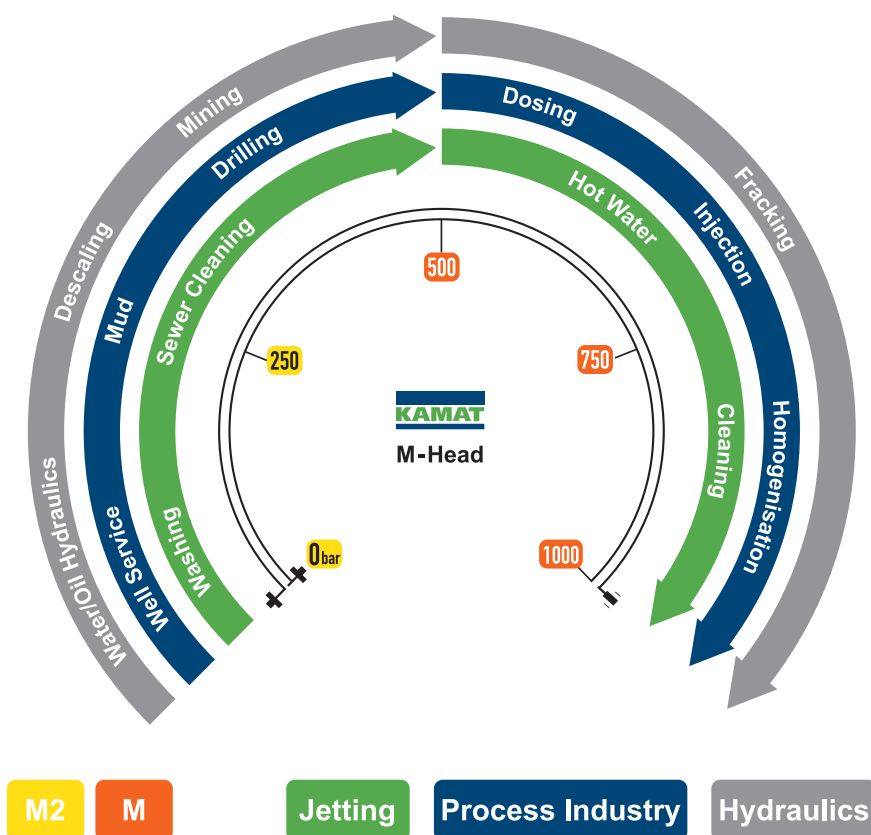
### M VALVE SOFT



### A VALVE



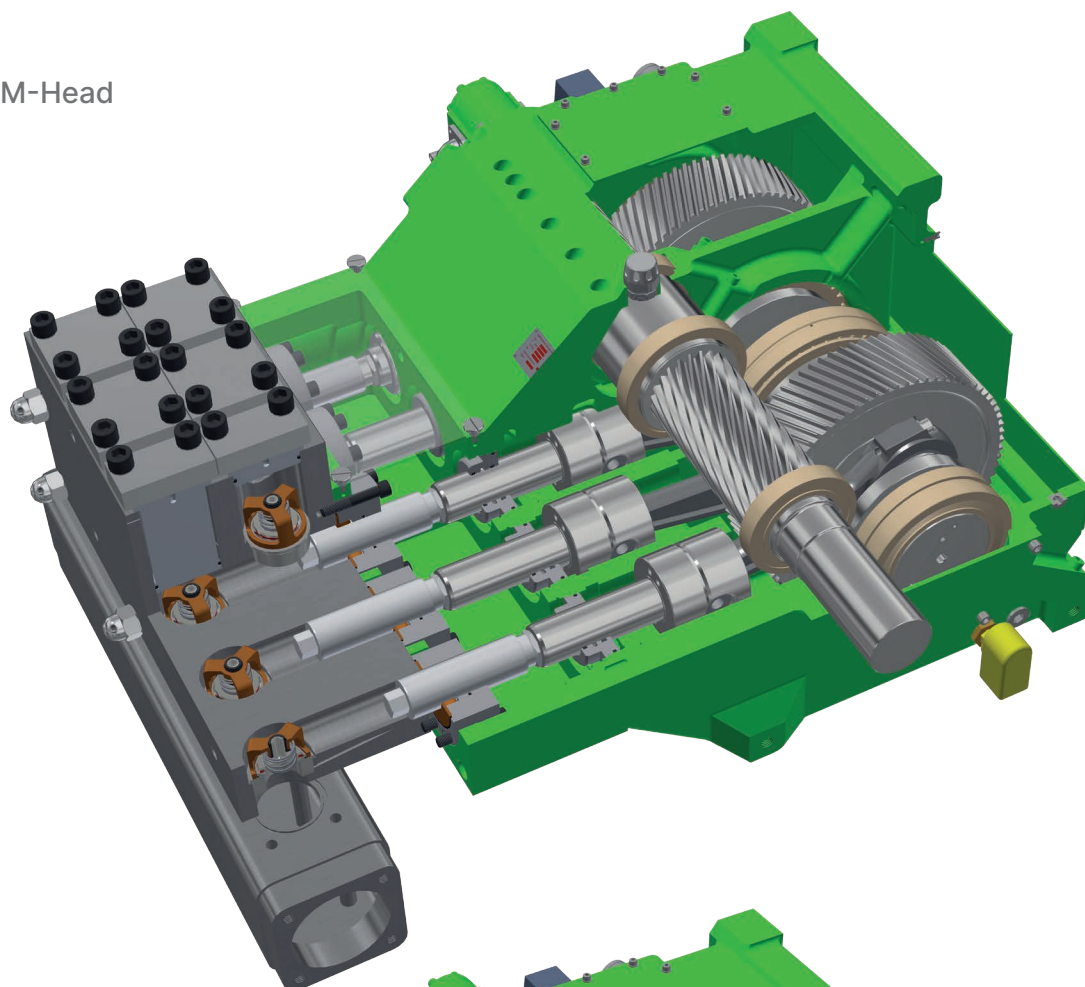
# WIDE RANGE FOR ALL APPLICATIONS



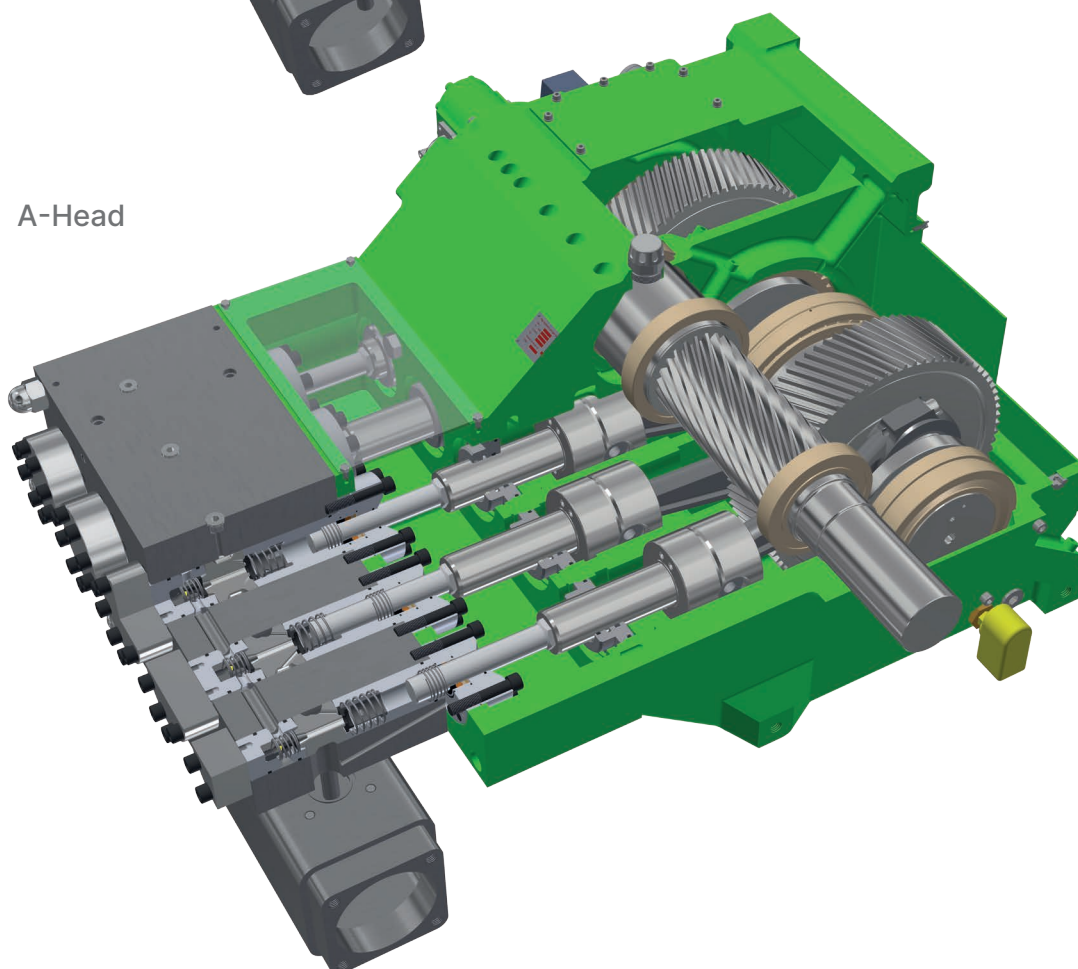


## INSIDE VIEWS OF OUR PUMPS

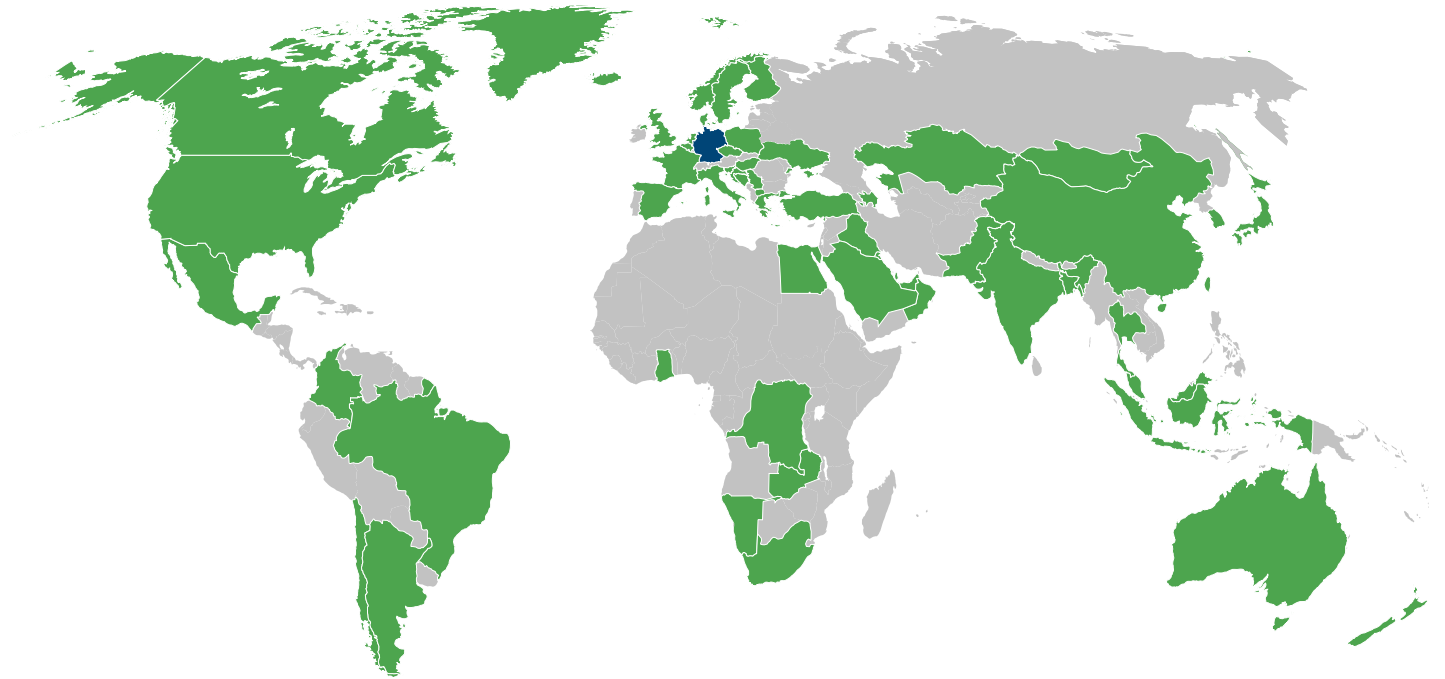
M-Head



A-Head



# KAMAT WORLDWIDE



Official partner:



+49 2302 8903 0  
info@KAMAT.de  
[www.KAMAT.de/en](http://www.KAMAT.de/en)

