

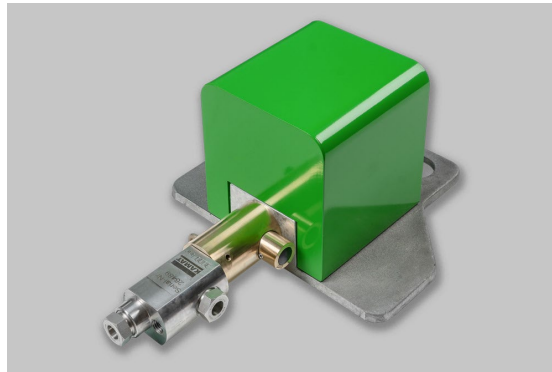
FOOT VALVES AND ELECTRIC FOOT SWITCH

Mechanical and electrical

Z 85-1e

29.05.2020

Seite/Page 1/1



Technical Data – Foot Valve 1500

▪ Part No.:	7032719	Additional equipment	
▪ Max. working pressure:	1500 bar	Hose connection adaptor M22x1.5	7009212
▪ Nominal diameter:	DN 8	Hose connection adaptor M24x1.5	7009213
▪ Pressure connection:	M26x1.5 female	Initiator for remote control	7017928
▪ Design:	mechanical		

Technical Data – Dump Foot Valve 1500

▪ Part No.:	7032733	Additional equipment	
▪ Max. working pressure:	1500 bar	Hose connection adaptor M22x1.5	7009212
▪ Nominal diameter:	DN 6	Hose connection adaptor M24x1.5	7009213
▪ Pressure connection:	M26x1.5 female	Initiator for remote control	7017928
▪ Design:	mechanical		

Technical Data – Dump Foot Valve 3000

▪ Part No.:	7032732	Additional equipment	
▪ Max. working pressure:	3000 bar	Initiator for remote control	7017928
▪ Nominal diameter:	DN 6		
▪ Pressure connection:	autoclave HP-Fitting Pressure ring M14x1.5 LH and Pressure screw M26x1.5		
▪ Design:	mechanical		

Technical Data – Foot switch

▪ Part No.:	7017920
▪ Design:	electrical
▪ complete with 2 m cable and plug 6-pole	